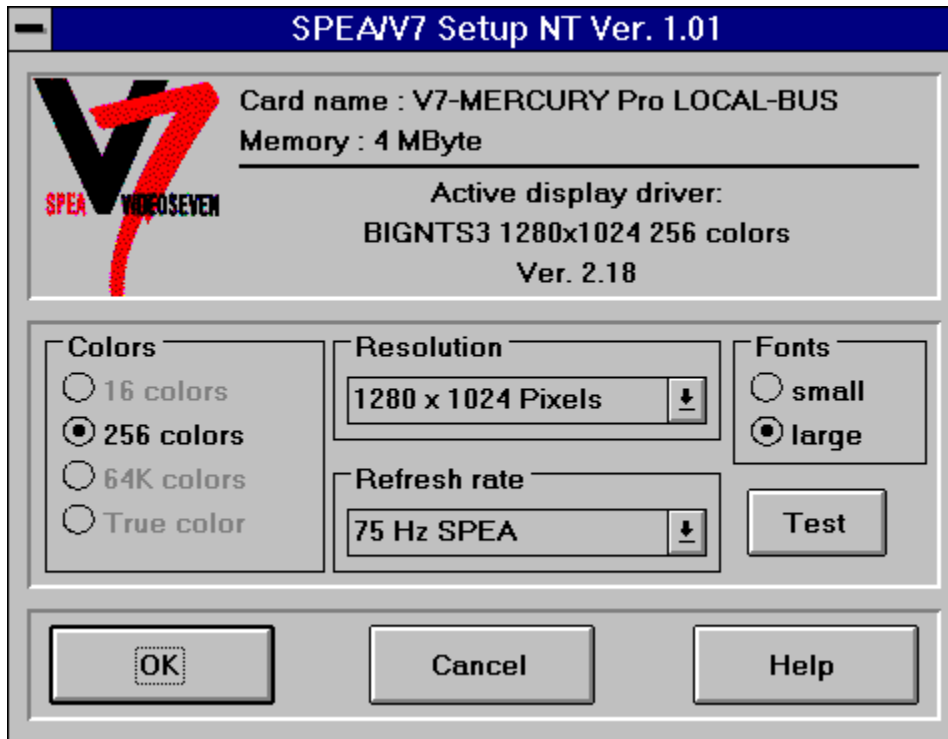


V7Setup NT Online Help Index

Click on the area for which you require online help!



Further help topics:

[Restart Options for Windows NT](#)
[Error Reports](#)

Colors

Allows you to select the maximum number of colors that can be simultaneously displayed on your screen (64K = 64,000, True Color = 16.7 million).

Changing this parameter may influence the resolution and refresh rate settings. If the current screen refresh rate is not available for the number of colors selected, then the program automatically uses the first entry from the corresponding selection box. Color depths that are not supported by the current software version can not be selected.

Resolution

Select the screen resolution with this setting.

Changing this parameter may influence the refresh rate and the fonts selection. If the current screen refresh rate is not available for the current resolution, then the program automatically uses the first entry from the corresponding selection box. If the selected resolution is smaller than 1024 x 768 pixels, the small fonts will automatically be used, else the large fonts.

Refresh rate

This setting sets the refresh rate of the display.

Click on the TEST button in order to test whether your monitor is able to handle the selected refresh rate. The TEST button is only active if a SPEA V7 driver is already loaded and the selected refresh rate is possible for current video mode.

Warning: If you permanently use a refresh rate that is too high for your monitor you may damage it!
Read the manual of your monitor to check which refresh rates it can handle.

Fonts

Selects small or large fonts for screen display.

By changing the resolution, the fonts will be automatically adjusted to an optimal size. If the selected resolution is smaller than 1024 x 768 pixels, small fonts will automatically be selected, else the large fonts.

Test Button

After you have changed one or more settings, you should check that your monitor can handle the new configuration before you leave V7Setup NT. If you click on the TEST button, the start-up logo will be shown for about 5 seconds using the following settings: colors, resolution and refresh rate.

Warning: If you permanently use a refresh rate that is too high for your monitor you may damage it! Read the manual of your monitor to check which refresh rates it can handle.

Windows NT Restart Options

You must restart Windows NT to activate your changes.
To do this, select one of the following options in V7Setup NT:

Shutdown and restart	Ends your current Windows NT session and restarts the application using the new driver.
Shutdown	Ends your current Windows NT session without restarting the application. The changes you have made will be activated when you start Windows NT again.
Don't shutdown	Leaves V7Setup NT without ending the current Windows NT session. The changes you have made will be activated when you start Windows NT again.

Error Messages Overview

Not sufficient memory on the destination drive

File '...' cannot be created

File '...' cannot be copied

File '...' not found

WARNING : Program group cannot be created

Not sufficient memory on the destination drive

There is not enough space on the drive where you have installed Windows NT.
V7Setup NT can't copy the file to the WINDOWS - or SYSTEM - directory.

Delete one or more unnecessary files on this drive, and try again.

File '...' cannot be created

V7Setup NT can't create the file in the WINDOWS NT - or SYSTEM - directory.
It is possible that the specified file already exists with write-protection or that the drive is write-protected.

Remove the write-protection of the drive or existing file.

File '...' cannot be copied

V7Setup NT can't copy the specified file.

If you receive a system error message you must find the cause and eliminate it before trying again.

File '...' not found

V7Setup NT can't find the specified file.

Be sure you have inserted the correct disk with the SPEA V7 Windows NT drivers and that the source path is correct. Try again after checking these entries.

WARNING : Program group cannot be created

V7Setup NT can't create the Program Manager Group 'SPEA/V7 Setup'.

You can create the group 'SPEA/V7 Setup' manually or place the V7Setup NT icon in another program group.

